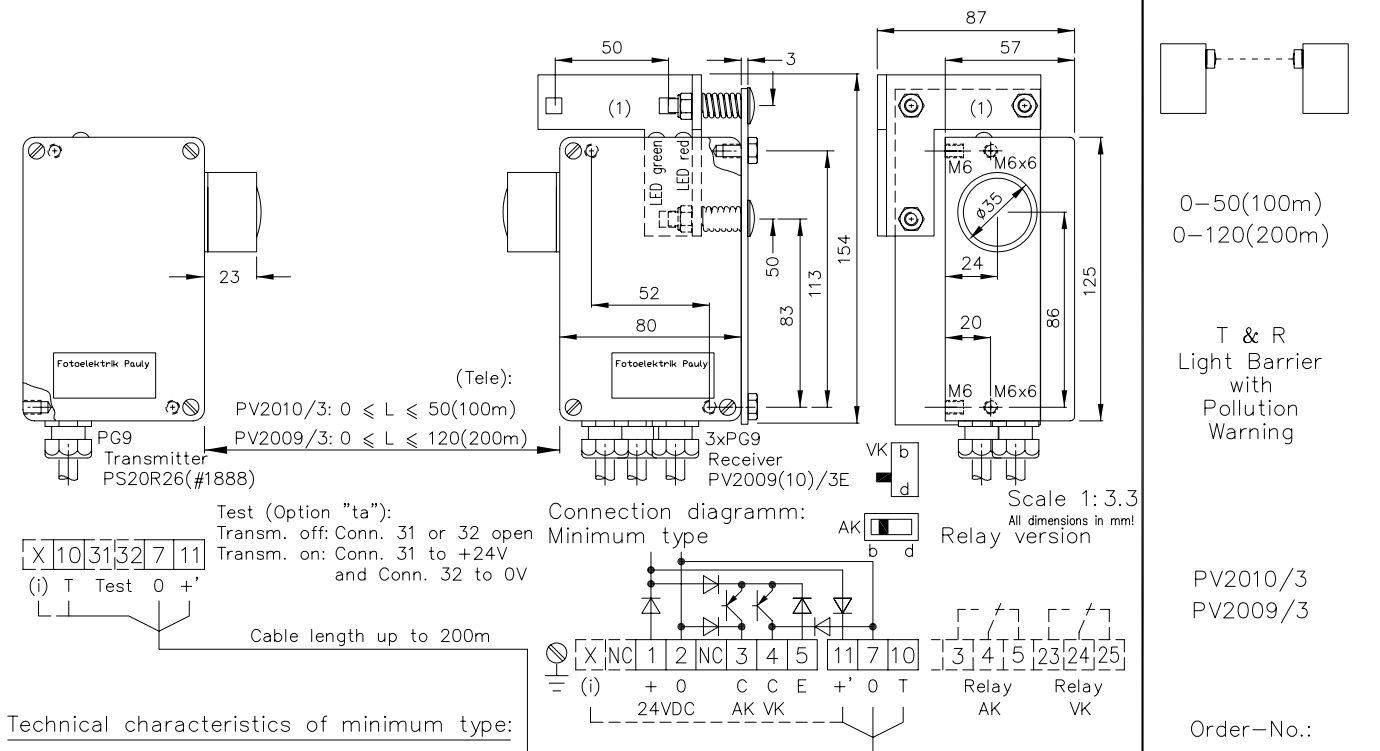


Transmitter-Receiver Light Barrier Type PV2010/3 & PV2009/3 with Pollution Warning Output



Housing	Al-Cast
Weight	Receiver: approx. 700g Transmitter: approx. 500g
Protection mode	IP65
Connection	Terminal strip
Supply	24VDC/70mA without load
Output	pnp 60mA s.c.-prot., e2
Signal mode	bright-/darkswitching, selectable
Transmitter light	GaAs 880nm, invisible
Steady light	PV2009/3: >80kLx resistance PV2010/3: >100kLx
Interference suppressor	Force synchronization
Access time	<12ms/switch transition
Switching rate	Relay: 10/s; electron.: 40/s
Switch indicators	LED's, Receiver
Working indicator	LED, Transmitter
Ambient temperature	-25...+60°C

Features:

Connection	6+1 pole Plug, stA7 6+1 pole Plug, stH7 5+1 wire No.-Cable, K6
Supply	24...80VDC 230VAC, 115VAC, 42...48VAC, 24VAC or 230/115/45VAC with universal transformer
Output	2x npn 60mA s.-c.-prot., e3 2x Optocoupler 60V/50mA, e1 2x Relay 250VAC/10A, 2500VA, 1xCh, R
Access time	"q": <2ms/transition
Switching rate	"q": 300/s, Relay 10/s
Time delay	0-10s, switching-on-off-delay, separately adjustable, z10 (only AK)
Level indicator	DIANA, i
Lev. ind. f. Trans.	DIANA, R: i-i, T: ii
If using cooling water flange,	then milled wall, y
Heatprotected transducersystem,	pl
Teleobjectives,	t

Hints:

The switching equipment for the Pollution Warning (VK, red LED) is switched through when, in case of free optical path (green LED on), dirt or clogging causes the signal level to be under five times the minimum level.

0-50(100m)
0-120(200m)

T & R
Light Barrier
with
Pollution
Warning

PV2010/3
PV2009/3

Order-No.:

1613
1614

1613 DE (18.01.00 tb) 25.05.05 tb
E-1613-1 (07.01.03 gs)
(20.07.95 tb) (17.02.05 mj)
(21.06.96) (14.04.05 mi)

Accessories:

- Diaphragms
- Optical filters
- Adjustment flange JF26H (1)
- Heavy adjustment flange R26SH
- Elbow tube adjustment AD26SS1 or AD26SS2
- Cooling water flange KW26
- Anti dust tube TUB46
- Integrated protection system KJT26 or KRT26*

* Including: cooling by water, adjustment, anti dust tube (optional: diaphragms, optical filter)