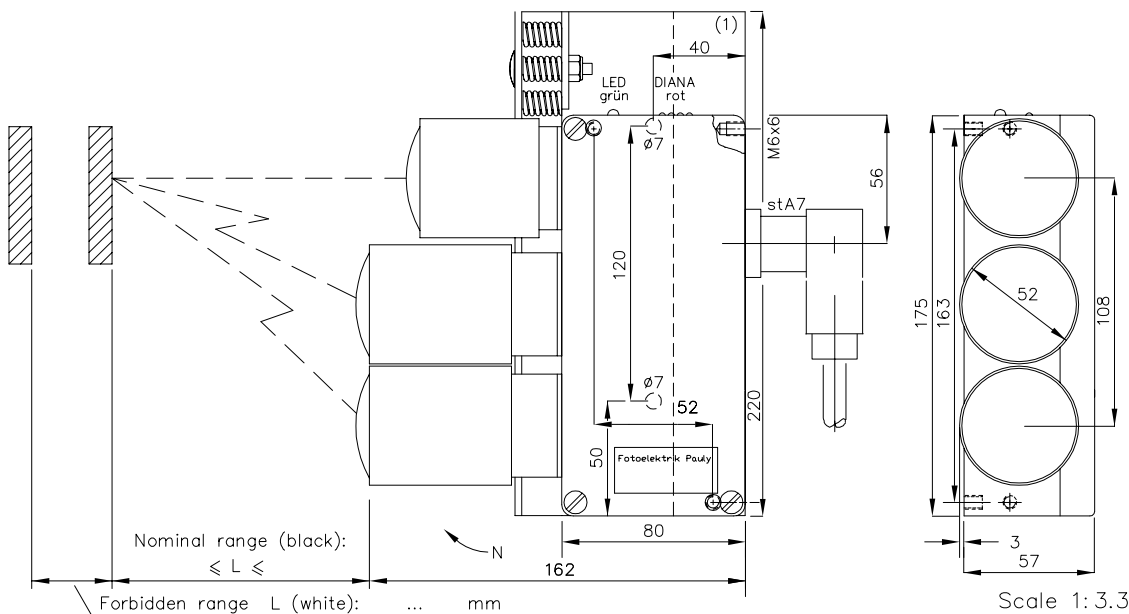


Reflex-Scanner Type JP103RFZ / / t

Special Type PRFZ13 / / / t

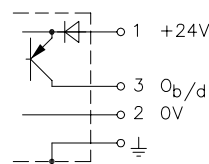


Note: Angle of incidence:

1. Diffuse reflecting surfaces are reliably detected even when the scanning beam's angle of incidence deviates sharply from 90°.
2. Reflecting surfaces can considerably impair the scanning quality.
3. However, reflective surfaces can still be recognised beyond the forbidden distance  $\bar{L}$ ; slightly tilting the scanner helps.
4. Tilting should only be done in the direction of the "N" arrow.
5. In the case of cylindrical scanning objects the scanning beams should be directed onto the surface line as far as possible.

Technical Characteristics of the minimum version:

Housing	Al-Cast
Weight	approx. 1400g
Protection mode	IP65
Connection	6+1 pin Plug stA7
Supply	24VDC/70mA without load
Output	pnp 60mA s.c.-prot., e2
Signal mode	bright-/darkswitching, selectable
Transmitter light	GaAs 880nm, invisible
Steady light resist.	>80kLx
Interference suppress.	forced synchronization
Access time	<12ms/switch transition
Switching frequency	electron.: 40/s; Relay: 10/s
Switch indicator	LED (green)
Level indicator	DIANA,i (red)
Ambient temperatur	-25...+60°C



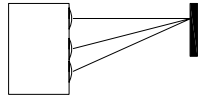
Connecting diagram of version: 24VDC, e2, 6+1 pin plug stA7

Options:

Connection	4 pin plug stLU4 4+1 pin plug stA5 3+1 wire no.-cable ...mK4
Output	nnp 60mA s.c.-prot., e3 Relay 240VAC/5A, 120W/1200VA, 1xCh, R Optocoupler 60V/50mA, e1 also: 2xe2/2xe3 or antival. e4/e5
Access time	"q": <2ms/switch transition
Switching freq.	"q": electron.: 300/s, Relay: 10/s
Heat-protected optical system, pl	
If using cooling water flange, then milled wall, y	

Accessories:

- Heavy adjustment flange R27SH (1)
- Stauff-clamp adaptor AD27SS2
- Cooling water flange KW27



1200-3000mm

Reflex-Scanner

JP103RFZ... t  
PRFZ13.../././ t

Order-no.:

1452

1452 DE 1  
 E 1452 1  
 06.06.03 gs  
 18.02.05 m

Description of Application: \_\_\_\_\_

\_\_\_\_\_

\_\_\_\_\_

\_\_\_\_\_