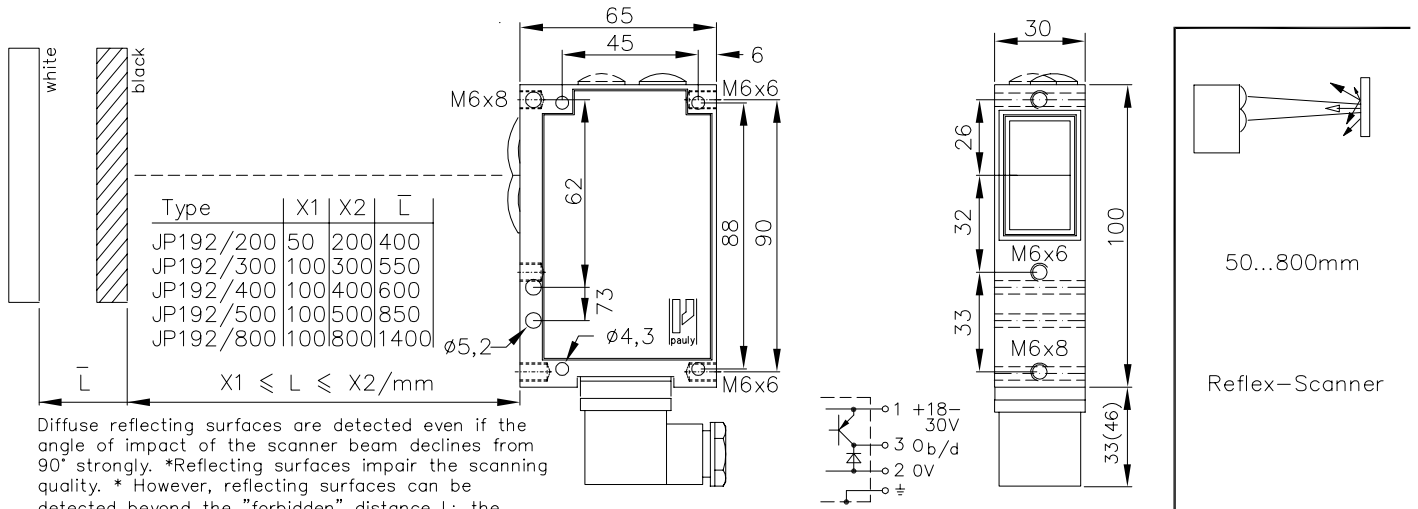


## Reflex-Scanner with passive Background Response Suppression

### Type JP192/X[mm]



#### Technical Characteristics:

Housing	Al-Cast
Weight	approx. 350g
Protection Mode	IP65
Connection	3+1 pin Plug stH4
Supply	24VDC/40mA without load
Output	pnp 60mA s.c.-prot., e2
Signal mode	bright-/darkswitching selectable
Transmitter light	LED 880 invisible
Steady light resist.	>80kLx
Interference Suppressor	forced synchronization
Light beam diameter	approx. 70mm/800mm
Access time	<12ms/switch transition
Switching frequency	40/s, Relay: 10/s
Switch indicator	LED
Ambient temperatur	-20...+60°C
Amplification adjustable	with potentiometer "E"

#### Options:

Connection	4 pin Plug stLU4 4+1 pin Plug stA5 6+1 pin Plug stA7 6+1 pin Plug stH7 3+1 wire no.-cable K4 2x3 wire no.-cable 2K3
Supply	230V, 115V, 42...48V 24V AC 24...230VUC
Output	nnp 60mA s.c.-prot., e3 Optocoupler 60V/50mA, e1 Relay 240VAC/5A, 120W/1200VA, 1xCh, R also: 2xe2/2xe3 or antival. e4/e5
Access time	"q": <2ms/switch transition
Switching frequency	"q": 300/s, Relay 10/s
Time delay	0-10s, switching-on-off-delay, separately adjustable, z10
Level indicator	DIANA, i
Heat-protected optical system, pl	
If using cooling water flange, then milled wall, y	

JP 192/200  
JP 192/300  
JP 192/400  
JP 192/500  
JP 192/800

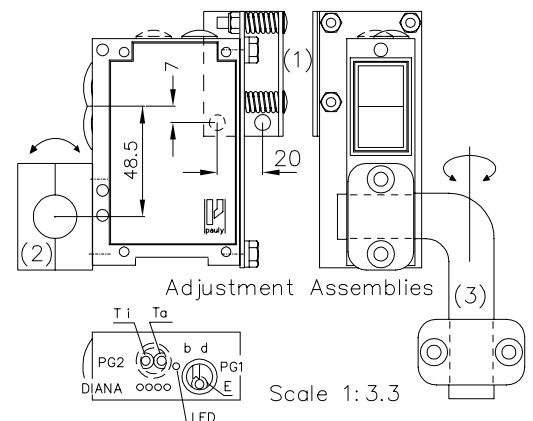
Order-no.:  
1261  
1265  
1262  
1266  
1267

#### Accessories:

Diaphragms, special filters  
Adjustment flange JF19H (1)  
Elbow tube adjustment JR19 (2&3)  
Cooling water flange KW19  
Heat shield & anti dust tube (K)JT19

#### Hints:

Selection of bright/dark switching mode is standard. The selection switch can be reached after removing the blanking screw designated 'PG1'. Bright switching means that the output (here the pnp transistor) is operated when the transmitter light is received by the receiver after being reflected by the reflector. The switch indicator LED (green) for the working contact always lights when the output is energised. The on- (Ti) and off- (Ta) delay are optional. Turning the controls behind 'PG2' clockwise increases delay times. The delay time range is between approx. 0 and 10 secs. Other delays are available on request. 1sec, 3secs and 20secs. The level indicator 'DIANA' (Digital ANALog indicator) is optional, too. DIANA shows the level approx. 20 to 25 times above the threshold signal. For proper operation of the light barrier it is not necessary to have all DIANA LEDs on!  
\*E\_166x 1.TXT\*



1261 DE  
E\_1261\_1  
(15.02.96 tb)  
(15.01.03 gs)