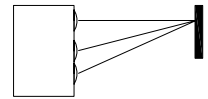
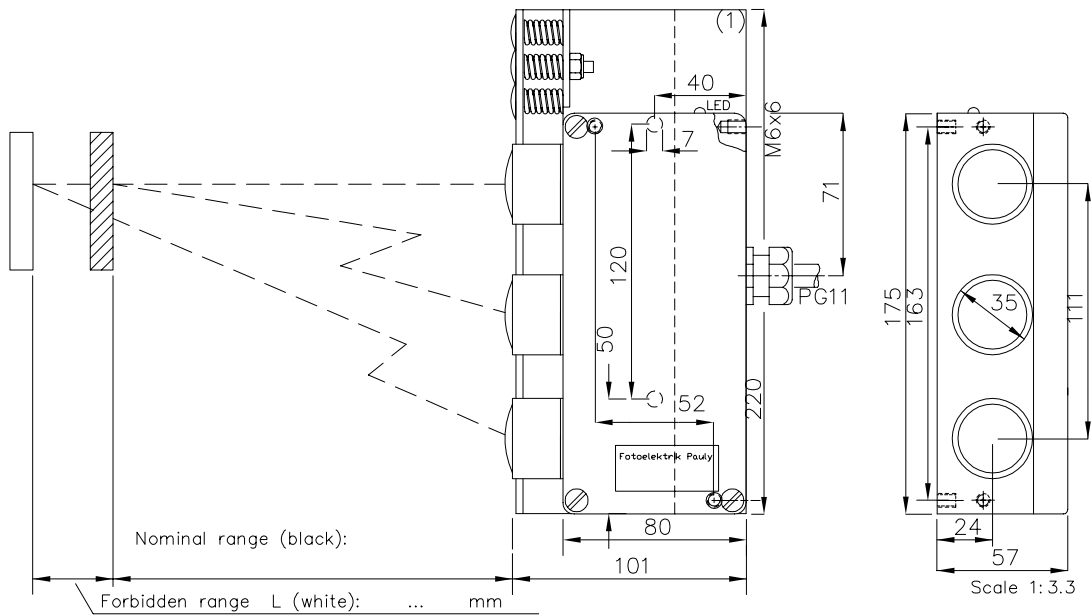


## Reflex-Scanner with active Background Response Suppression

Type PR1031RFZ / /



400-1500mm

Reflex-Scanner with active Background Response Suppression

PR 1031 RFZ...

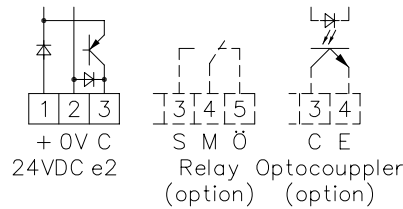
Order-no.:

1456

**Note:**

- Diffuse reflecting surfaces are reliably detected even when the scanning beam's angle of incidence deviates sharply from 90°.
- Reflecting surfaces can considerably impair the scanning quality.
- However, reflective surfaces can still be recognised beyond the forbidden distance L; slightly tilting the scanner helps.
- Tilting should only be done in the direction of the "N" arrow.
- In the case of cylindrical scanning objects the scanning beams should be directed onto the surface line as far as possible.

**Connection Diagram:**



**Options:**

Connection	4+1 pin Plug stA5 6+1 pin Plug stA7 3+1 pole no.-cable K4
Output	Relay 240VAC/5A 120W/1200VA, 1xCh, R npn 60mA s.c.-prot., e3 Optocoupler 60V/50mA, e1
Access time	"q": <2ms/switch transition
Switching rate	"q": electron.: 300/s; Relay: 10/s
Heat-protected optical system, pl	
If using cooling water flange, then milled wall, y	
Time Delay	0...10 s, switching-on-off-delay, separately adjustable, z10

**Accessories:**

- Heavy adjustment flange R27SH (1)
- Stauff-clamp adaptor AD27SS2
- Cooling water flange KW27

**Technical Characteristics:**

Housing	Al-Cast
Weight	approx. 1000g
Protection mode	IP65
Connection	Terminal strip/PG11
Supply	24VDC/60mA without load
Output	pnp 60mA s.c.-prot., e2
Signal mode	bright-/darkswitching, selectable
Transmitter light	GaAs 880nm, invisible
Steady light resistance	>80kLx
Interference suppression	forced synchronization
Access time	<12ms/switch transition
Switching rate	electron.: 40/s; Relay: 10/s
Switch indicator	LED green
Level indicator	4xLED red, DIANA
Ambient temperatur	-25...+60°C

**Description of Application:**

1456 DE (12.06.03 gs)  
 E-1456 1 (18.02.05 m)  
 (21.06.95 tb)  
 (09.01.98 tb)

---



---



---